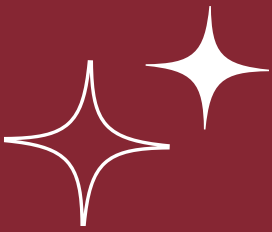


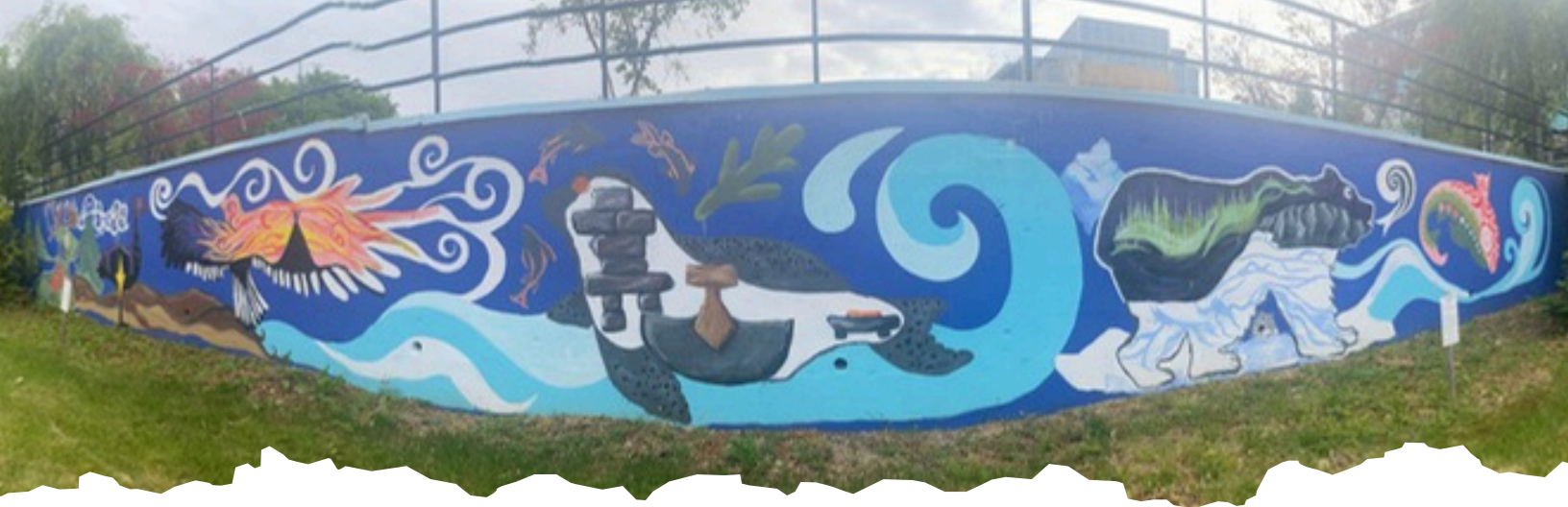
ResLife Student Residence Offices

YEAR RECAP

MEMORIAL UNIVERSITY OF NEWFOUNDLAND AND LABRADOR

2024-
2025





SUPPORTING INDIGENOUS VOICES

We acknowledge that the lands on which Memorial University's campuses are situated are in the traditional territories of diverse Indigenous groups, and we acknowledge with respect the diverse histories and cultures of the Beothuk, Mi'kmaq, Innu, and Inuit of this province.

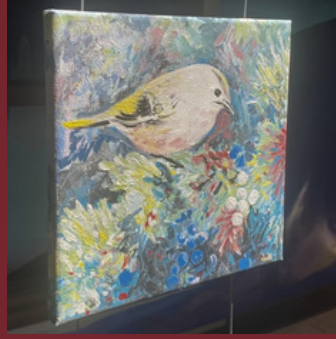


TABLE OF CONTENTS

1. Fall 2024

- Meet the Houses
 - Barnes House
 - Blackall Hosue
 - Bowater House
 - Burke House
 - Burton's Ponds
 - Cluett Hall
 - Curtis House
 - Doyle House
 - Hatcher House
 - Rothermere House
 - Shiwak Hall
 - Squires House
- Move-in Day
- Welcome Week/RezEx

2. Winter 2025

- Winter Welcome
- RA Programs
- House Council Events
 - Mac Cup
 - Tower Tip-Off
- ResLife Programs
- Awards Gala
- Sea-Hawks Spirit
 - Games and Events

3. Living Local: The Campus Advantage

- Safety First
 - Meet Campus Enforcement
- Campus Buildings/ Spaces
 - R. Gushue Hall
 - Hatcher Commons
 - Hatcher West
 - Late Night Eats Program
 - Student Housing Office
 - QEII Library
 - The Works
 - Student Residence



Meet The Houses

2024

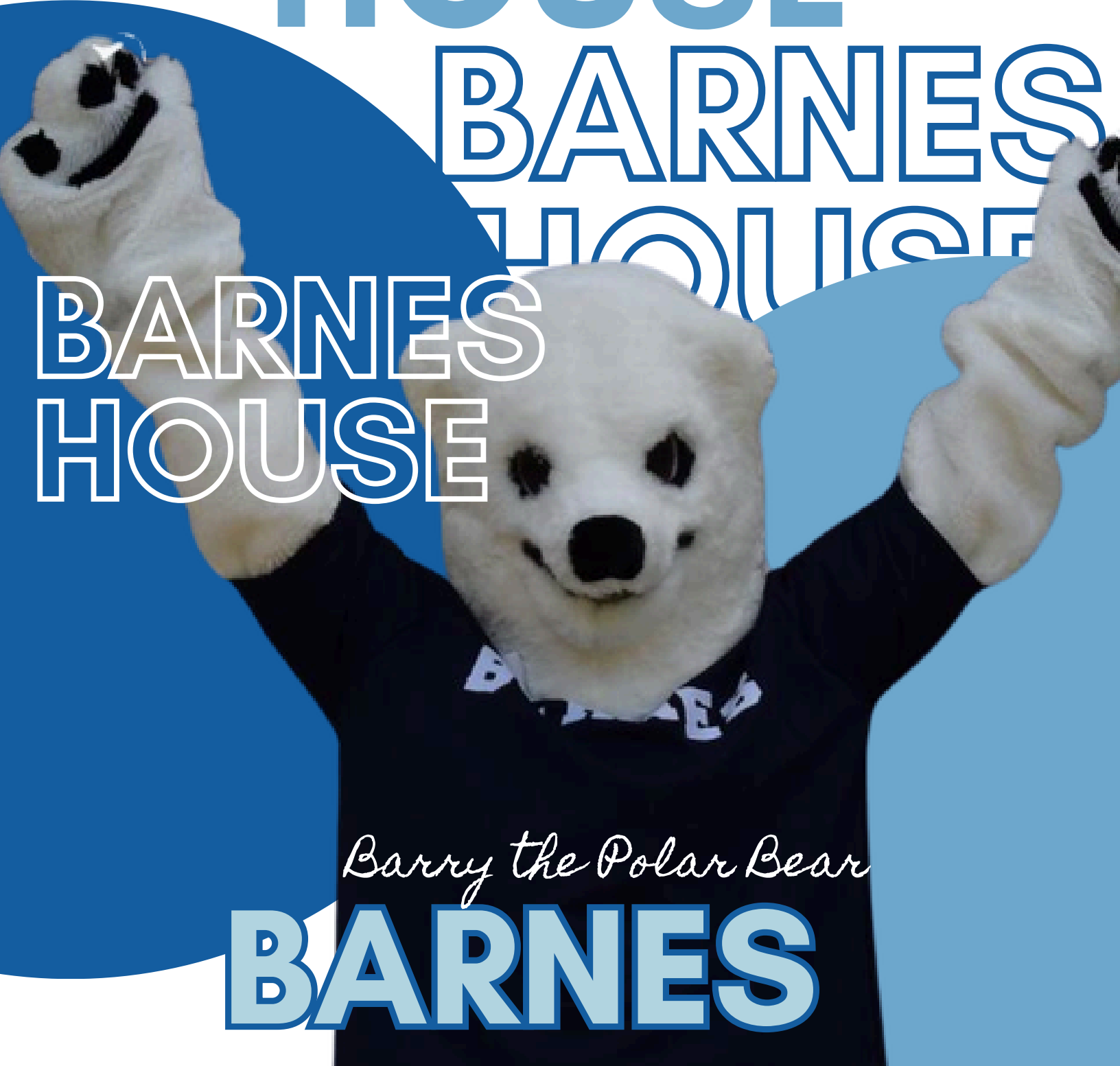


2025

**BARNES
HOUSE**

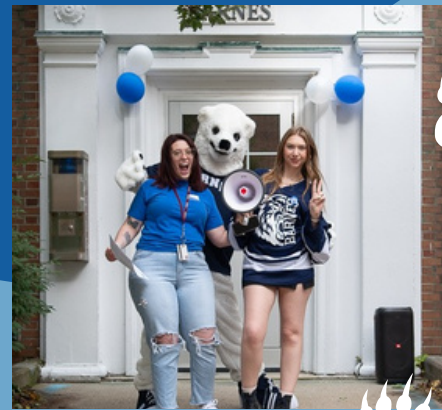
**BARNES
HOUSE**

**BARNES
HOUSE**



Barry the Polar Bear

BARNES





BLACKALL HOUSE

BLACKALL
SE

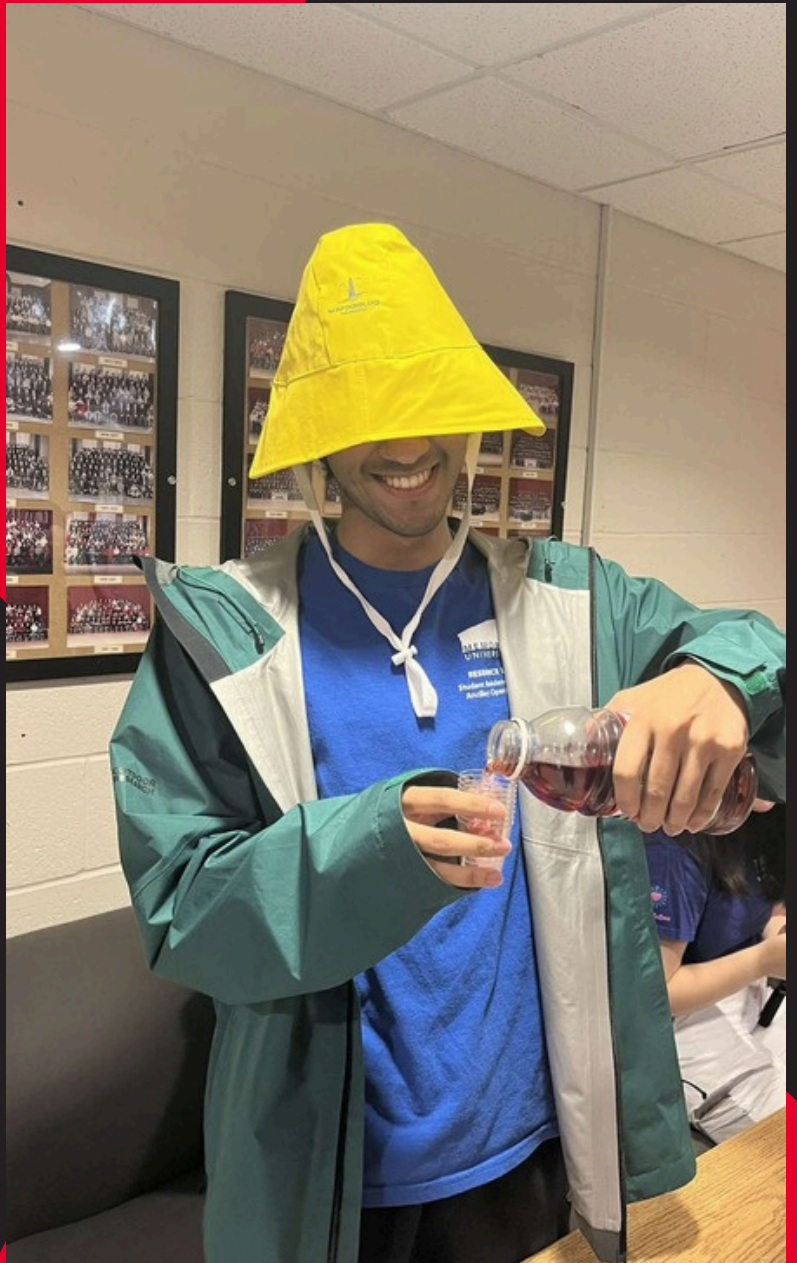


BLACKALL
HOUSE

Petey the Panther

BLACKALL





BOWATER HOUSE



BOWATER
HOUSE

Dingo the Coyote

BOWATER





BURKE HOUSE

BURKE
HOUSE

BURKE
HOUSE



Binky the Bunny

BURKE





BURTON'S PONDS



BURTON'S
PONDS

BURTON'S
POND

Sir. Quackington the Duck

BURTON'S POND





CLUETT HALL

CLUETT

CLUETT
HALL

Ramsy the Ram

CLUETT







CURITIS HOUSE



CURTIS
HOUSE

Buster the Bulldog

CURTIS





**DOYLE
HOUSE**

**DOYLE
HOUSE**

Bucky the Deer

DOYLE







HATCHER HOUSE

HATCHER
HOUSE

HATCHER
HOUSE

Hunter the Wolf

HATCHER







ROTHERMERE HOUSE

ROTHERMERE
HOUSE



ROTHERMERE
HOUSE

Rock the Rooster

ROTHERMERE





SHIWAK HALL

SHIWAK
HALL

SHIWAK
HALL

Johnny the Griffin

SHIWAK







SQUIRES HOUSE

SQUIRES
HOUSE

SQUIRES
HOUSE



Shaggy the Shark

SQUIRES





Move in Day

AKA BEST DAY OF THE YEAR



Welcome

Home







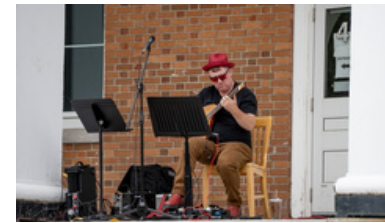
WELCOME WEEK

REZEX 2024

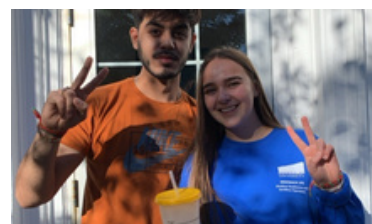


A WEEK OF
EVENTS TO
WELCOME YOU
TO CAMPUS AND
MEET FRIENDS

REZ RALLY



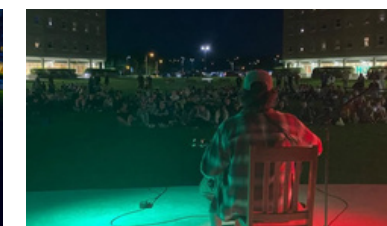
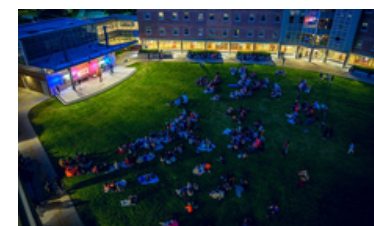
OUTDOOR FUN



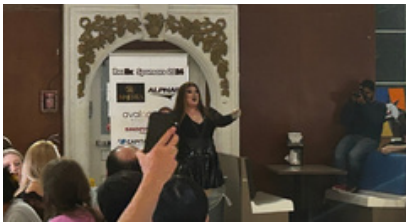
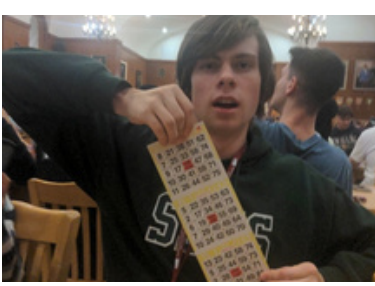
NEW FRIENDS



REZ GOT TALENT



ROAD RACE & BINGO



FOREVER FUN





WINTER

2025



Winter Welcome Week



RA PROGRAMS





HOUSE COUNCIL

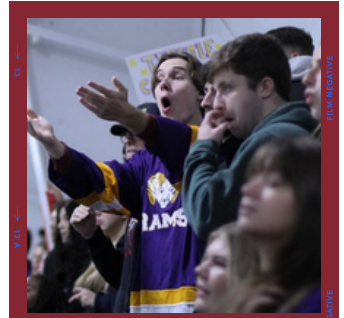
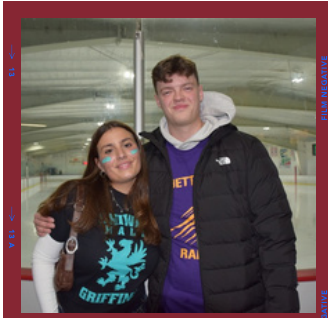
EVENTS 2024/25



**HOUSE COUNCIL
EVENTS ARE HOSTED
AND CREATED BY
STUDENTS ON CAMPUS
WHO DEVELOP
STUDENT LEADERSHIP
OPPORTUNITIES**

FALL 2024

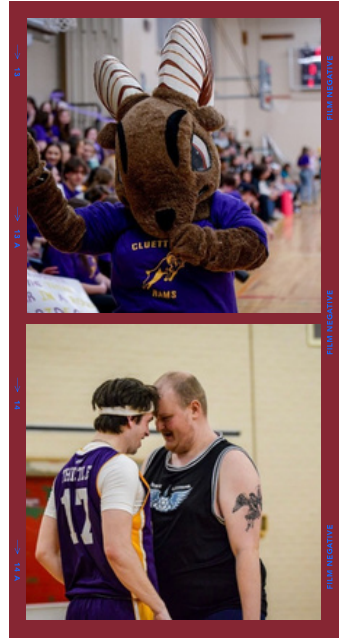
MAC-CUP

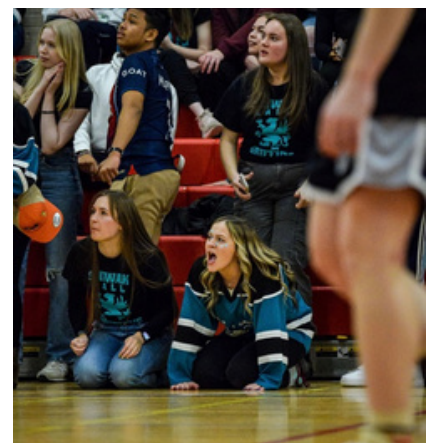




WINTER 2025

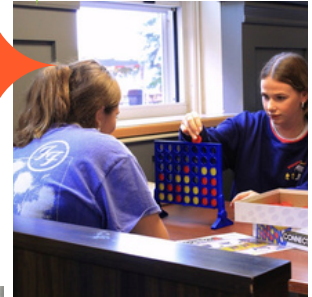
TOWER TIP-OFF





RESLIFE PROGRAMS





RESIDENCE AWARDS GALA



CELEBRATING THE LEADERSHIP WITHIN
STUDENT LIFE

ESU HAWKS



SEA-HAWKS

SPIRIT

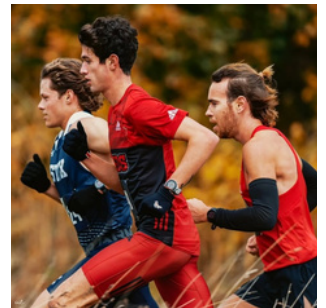
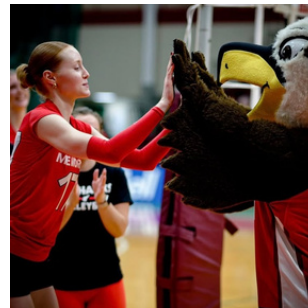
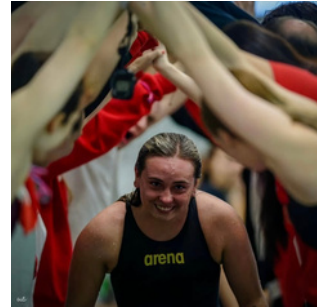


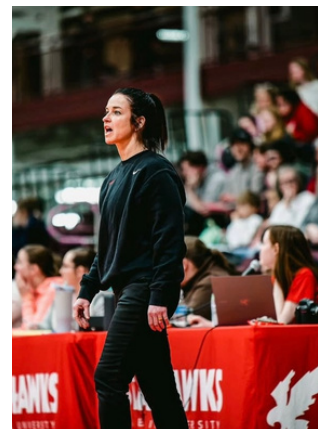
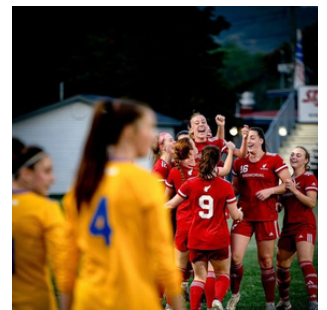
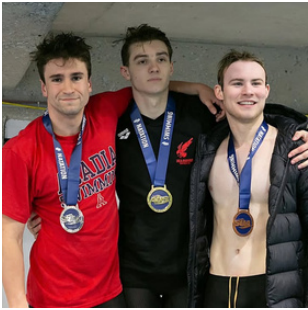
For More Information, Check

out: **SEA HAWKS INSTAGRAM**
@MUNATHLETICS

Sea-Hawks

GAMES & EVENTS





LIVING LOCAL

The Campus Adventure



Meet Campus Enforcement

Safety First



Buildings & Spaces



CAMPUS MAP

Here is how you can find your way around campus!



FROM LIVING TO SCHOOL,
THIS MAP WILL HELP YOU
GET AROUND

MEMORIAL
UNIVERSITY

Location: University Centre



Location: Student Residences



STUDENT SPACES

Dining Hall

Location: R. Gushue Hall



The Mezzanine

Location: Upstairs Dining Hall



STUDENT SPACES

Hatcher Commons

Location: 1st Floor Hatcher House



Hatcher West

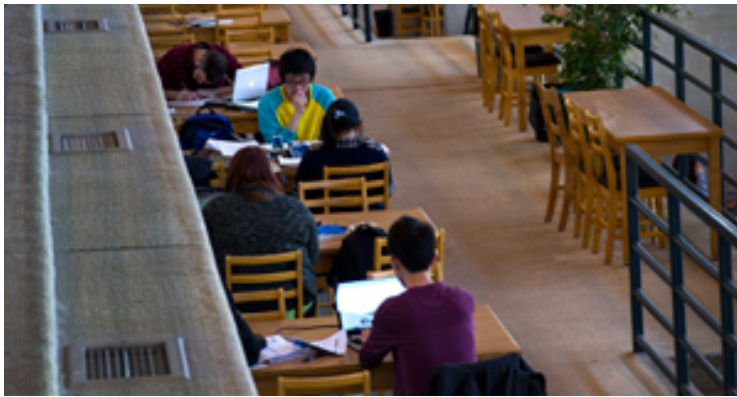
Location: 1st Floor Hatcher House

Late Night Eats Program

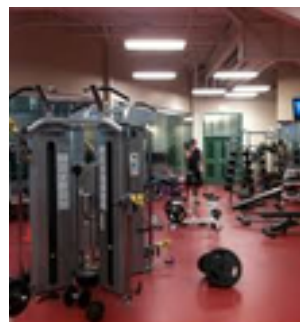
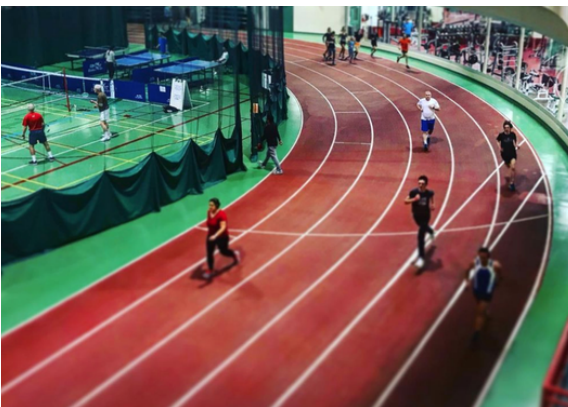
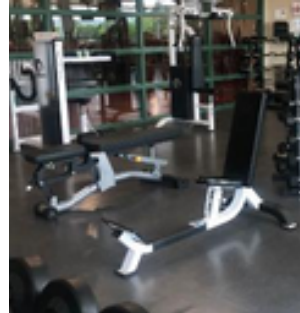


STUDENT SPACES

Queen Elizabeth II Library



The Works

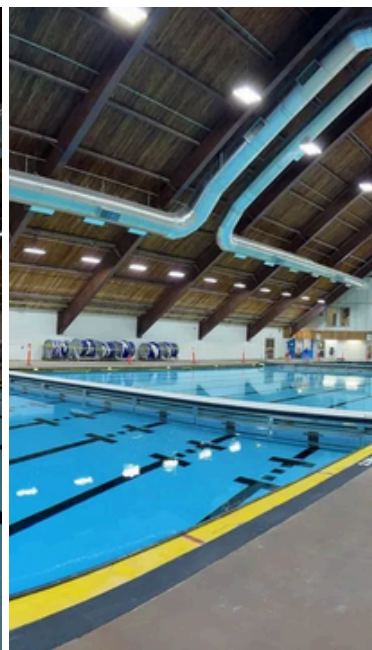


STUDENT SPACES

University Centre



The Aquarena



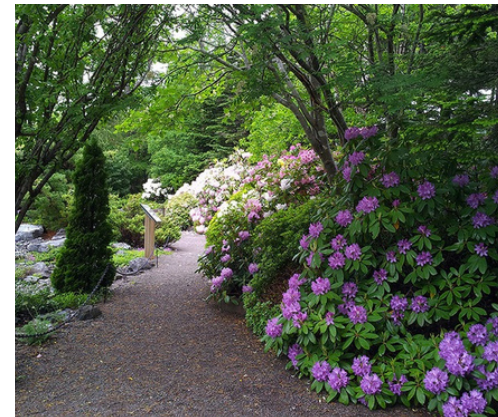
STUDENT SPACES

OFF CAMPUS FUN

The Rooms



Botanical Garden



MEET THE TEAM



@memorialreslife

STUDENT RESIDENCE OFFICE



RESIDENCE LIFE TEAM



Student Residences Paton College



Macpherson College



APPLY NOW

ST JOHN'S CAMPUS | YOUR HOME AWAY FROM HOME



Words from a student

"Campus life has provided me with the opportunity to build relationships that I will have for the rest of my life. I am glad that I moved here"



SCAN TO APPLY